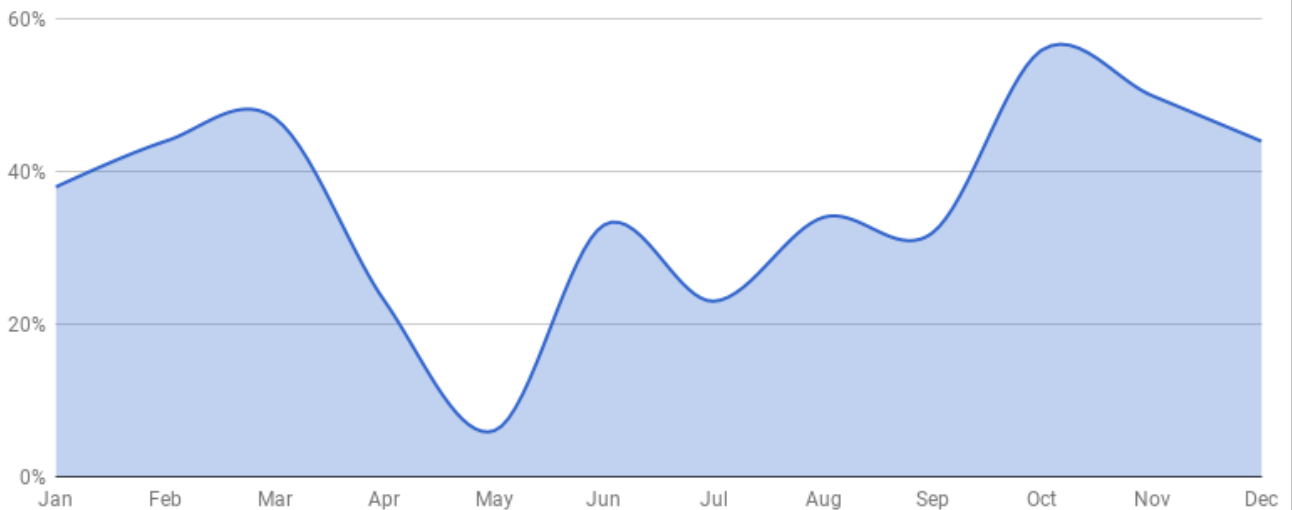


Scottish Hydro Sector load factor analysis 2017

	Jan	Feb	Mar	Apr	May	Jun	Jul	Aug	Sep	Oct	Nov	Dec	12 month average
Run of River Schemes													
Average load factor %	38%	44%	47%	23%	6%	33%	23%	34%	32%	56%	50%	44%	36%
Schemes reporting	31	31	31	31	31	31	31	34	35	37	36	37	
Storage Schemes													
Average load factor %	68%	54%	56%	48%	10%	57%	52%	67%	66%	84%	81%	81%	60%
Schemes reporting	4	4	4	4	4	4	5	5	5	5	5	5	
All Schemes													
Average load factor %	41%	45%	48%	25%	6%	36%	27%	38%	36%	59%	53%	48%	39%
Total schemes reporting	35	35	35	35	35	35	36	39	40	42	41	42	

Run of River Schemes



Storage Schemes

